



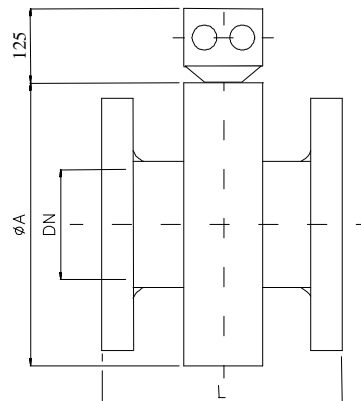
COMPACT ELECTROMAGNETIC FLOWMETER AP1025 / AP1026 / AP1029 - BASE version

Overall dimensions (mm) with flanges EN-1092-1 PN10 (DIN 2576 – ISO2501 – UNI 2277)



STAINLESS/CARBON STEEL VERSION
PTFE/Hard Rubber/EPDM

DN	A ∅	L		Weight (Kg)
		Standard	ISO	
20	140	200		6
25	140	200		7
32	168	200		8
40	168	200		9
50	168	200		10
65	219	200		12
80	219	200		13
100	256	250		16
125	273	250		19
150	284	300		23
200	332	300	350	30
250	389	300	450	38
300	440	300	500	50
350	472	300	550	72
400	523	400	600	96
450	574	400		102
500	624	400		120
600	726	400		150
700	830	400		195
800	932	400		250
900	1034	400		290
1000	1134	400		360
1100	1238	600		450
1200	1337	600		540



TECHNICAL DATA

- Version : BASE industrial general purpose
- Mounting : flange UNI – ANSI – DIN – ISO- EN1092-1
- Nominal size : AP1025 from DN20 to DN400 mm ; Lining PTFE -25 ÷ 130 °C
AP1026 from DN40 to DN1200 mm ; Lining Hard Rubber -10 ÷ 100 °C
AP1029 from DN50 to DN150 mm ; Lining EPDM -10 ÷ 90 °C
- Nominal pressure : standard PN10 (see optional)
- Measure piping : stainless steel
- Structure, flange : painted carbon steel (see optional)
- Structure : repairable (not welded)
- Anti-condensate sealing : polyurethane resin
- Measure electrodes : AISI316L-1.4404 (see optional)
- Accuracy : DN25÷300 ±0,5% V.L. ; DN350÷1000 ±1% V.L. ; DN1100÷ND1200 ±2% V.L.
- Output : 4 ÷ 20 mA 2 wires (10 ÷ 30 Vdc) selectable 0÷1.5 / 3 / 6 m/sec
- Electrical connections : with terminal block
- Insulation thermic class : F(155°C)
- Ambient temperature : -10 ÷ 50 °C
- Protection : IP 67 CEI EN 60529
- Humidity : 4 ÷ 95 % non condensing (air inside)
- Supply : 230 Vac ±20% standard (see optional)
- Power consumption : 8W
- Dimensions : see table
- Length : L standard (see optional)
- Burn-in : 40 hours
- MTBF : 60 ' 000 hours
- Optionals** : - nominal pressure PN16 – PN25 – PN40 – PN64
: - Stainless steel construction (AISI304-1.4301 - 316-1.4401)
: - Hastelloy B or C – Titanium electrodes
: - Power supply 115Vac – 24Vac – 24Vdc
: - length ISO 13359
: - length on request
: - displays / totalizers – field and panel installation – mod. AP105FT – AP218;
: - Bi-directional current output 12±8 mA;
: - Custom calibration on request;
: - **special executions on request**

Bull.	221
Last Updating	July 2004
Italian version	
English version	X